



WOMEN / CREW NECK SWEATSHIRTS
STELLA TRIPSTER DENIM



STSW147

The women's denim crew neck sweatshirt

Terry Sweatshirt
85% Organic ring-spun Combed Cotton, 15% Recycled Polyester
300 GSM

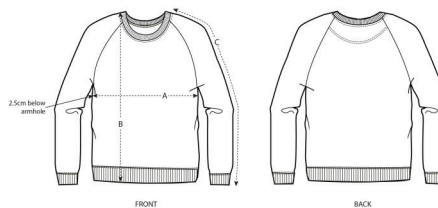
- Raglan sleeve
- 1x1 rib at neck collar, sleeve hem and bottom hem
- Inside back neck tape in single jersey
- Self fabric half moon at back neck
- Single needle topstitch at neck collar
- Sleeve hem and bottom hem with twin needle topstitch
- Slight shading on seams to give washed look

MEDIUM FIT

XS S M L XL

Size guide

COLORS



SIZES		XS	S	M	L	XL
A	Half Chest	47.5	50	53	56	59
B	Body Length	61	63	65	67	68
C	Sleeve Length	69	71	72.5	73.8	75

Combo options



Stanley Stroller Denim

Printing Specifications

Fits all kind of printing techniques. For more information, please visit our website.

Wash similar colours together, do not iron on print, wash and iron inside out.

