



WOMEN / TANK TOPS
STELLA WHISTLES

 110 per box

STTW203

The women's racerback tank top

Single Jersey
 50% Organic ring-spun Combed Cotton, 50% Tencel
 120 GSM

- Sleeveless
- Neck collar and armhole in self fabric binding with single topstitch
- Shoulder seams and side seams forward to front
- Side seams with flatlock topstitch
- Horizontal seam at back with slight gathering
- Curved bottom hem with mini overlock

RELAXED FIT

XS S M L

Size guide

WHITES

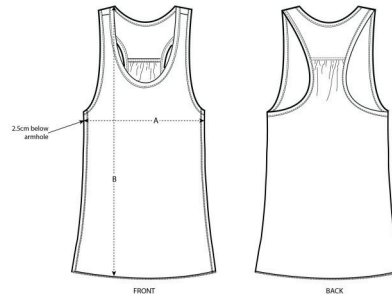


WHITE

COLORS



BLACK



| SIZES | | XS | S | M | L |
|-------|-------------|------|----|----|----|
| A | Half Chest | 40.5 | 43 | 46 | 49 |
| B | Body Length | 67 | 69 | 71 | 73 |

Printing Specifications

Fits all kind of printing techniques. For more information, please visit our website.

