



**MEN / ZIP-THRU SWEATSHIRTS**  
**STANLEY TOURS**



STSM617

**Zippered hoodie**

Terry Sweatshirt  
85% Organic ring-spun Combed Cotton, 15% Polyester  
300 GSM

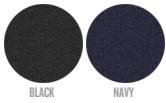
- Set-in sleeve
- Lined hood in single jersey
- Greige drawcords at hood
- Inside herringbone back neck tape in greige colour
- 1x1 rib at sleeve hem and bottom hem
- Raw edge kangaroo pocket with flatlock cover stitch
- Metal zip and eyelets
- Flatlock topstitch on all seams

MEDIUM FIT

XS S M L XL XXL XXXL

Size guide

COLORS

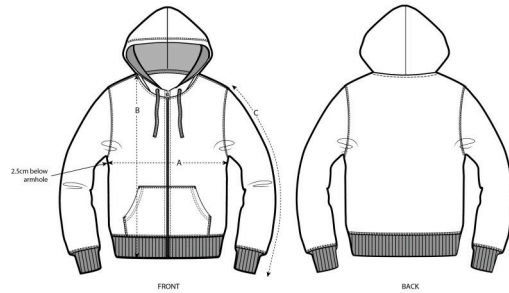


BLACK NAVY

ESSENTIAL HEATHERS



HEATHER GREY DARK HEATHER GREY



SIZES		XS	S	M	L	XL	XXL	XXXL
A	Half Chest	48	50.5	53	56	59	62	65
B	Body Length	67.5	69.5	71.5	73.5	75.5	77.5	79.5
C	Sleeve Length	63.5	65	66.5	68	69.5	71	71

Combo options



Printing Specifications

Fits all kind of printing techniques. For more information, please visit our website.

Wash similar colours together, do not iron on print, wash and iron inside out.

Close zip before washing.

