



WOMEN / WINDBREAKERS  
**STELLA WINDS**



STJW080

## The women's light hoodie jacket

Ripstop  
100% Recycled Polyester  
70 GSM

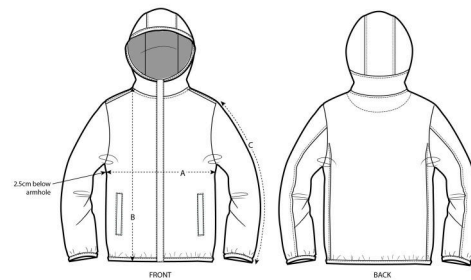
- Set-in sleeve
- Double layered hood in self fabric
- Hidden front placket with reversed nylon zip
- Side welt pockets with reversed nylon zip
- Elastic tape binding at hood opening, sleeve hem and bottom hem
- Inside hanger loop in self fabric
- Self fabric half moon at back neck
- Single topstitch on all seams

MEDIUM FIT

XS S M L XL

Size guide

### COLORS



SIZES		XS	S	M	L	XL
A	Half Chest	46	49	52	55	58
B	Body Length	60	62	64	66	68
C	Sleeve Length	62	63	64	65	66

### Combo options



Stanley Breaks

### Printing Specifications

Fits all kind of printing techniques. For more information, please visit our website.

Wash similar colours together, do not iron on print, wash inside out. Close all zips, buttons and velcros before washing.



**STANLEY/STELLA**

