



WOMEN / T-SHIRTS
STELLA LOVES



STTW006

Round neck tee-shirt

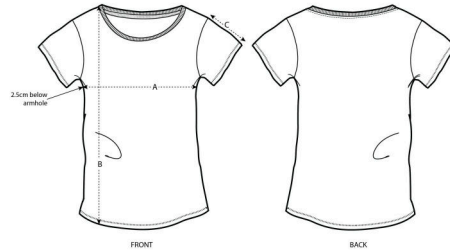
Single Jersey
100% Organic ring-spun Combed Cotton
120 GSM

- Set-in sleeve
- 1x1 rib at neck collar
- Inside back neck tape in self fabric
- Sleeve hem and bottom hem with blind topstitch
- Slightly curved bottom hem

MEDIUM FIT

XS S M L XL XXL

Size guide



SIZES	XS	S	M	L	XL	XXL
A Half Chest	42	44.5	47.5	50.5	53.5	56.5
B Body Length	62	64	66	68	69	69
C Sleeve Length	15	15	16	16	17	17

Combo options



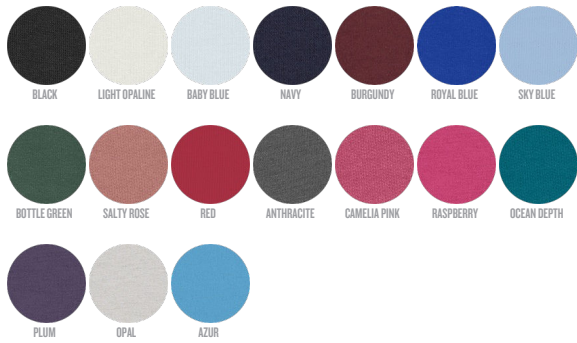
Printing Specifications

Fits all kind of printing techniques. For more information, please visit our website.

WHITES



COLORS



ESSENTIAL HEATHERS



SPECIAL HEATHERS



STANLEY/STELLA

Wash similar colours together, do not iron on print, wash and iron inside out.

